

2016 Tacoma Public Utilities QUICK FACTS

OUR MISSION

Tacoma Public Utilities provides services that are vital to our quality of life.

Power • Water • Rail • Click!



1,357
EMPLOYEES

NOTEWORTHY

- Community Connection recognized by United Way of Pierce County with the Public Sector Campaign of the Year award

REVENUE & BUDGET



2015 operating revenue

• **\$537.9** MILLION

2015-2016 budget

• **\$1.2** BILLION



LEADERSHIP

We are governed by a five-member utility board, the members of which appoint the Director of Utilities. Board members serve five-year terms.

BOARD

Mark Patterson, chair | Monique Trudnowski, vice-chair
Woodrow Jones, secretary | Bryan Flint | Karen Larkin

MANAGEMENT

Bill Gaines • Director of Utilities/CEO
Chris Robinson • Tacoma Power Superintendent
Linda McCrea • Tacoma Water Superintendent
Dale King • Tacoma Rail Superintendent
Steve Hatcher • Customer Services Manager
Bob Mack • Deputy Director for Public Affairs
Jim Sant • Deputy Director for Administration
Chris Gleason • Community & Media Services Manager

SERVING OUR COMMUNITY

TPU HELPED **3,845**



HOUSEHOLDS PAY THEIR
UTILITY BILLS WITH

\$687,636

IN ASSISTANCE

In addition,
TPU gave qualifying
seniors and adults receiving
disability benefits more
than **\$3 million**
in discounted utility bills.

COMMUNITY CONNECTION

EMPLOYEES VOLUNTEERED

2,184 HOURS

WITH LOCAL NONPROFIT ORGANIZATIONS AND

GAVE
MORE
THAN

\$318,000

IN CASH, PRODUCTS, AND VOLUNTEER TIME

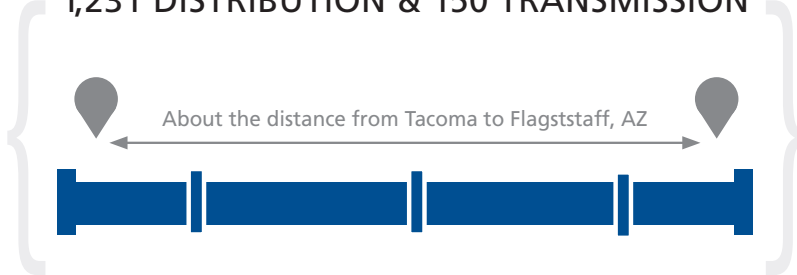
2015 was a milestone year for Tacoma Water, one marked by a declared drought that affected all operational areas. The year also proved that, whatever comes its way, the utility can flex and adapt to any circumstance while still completing its vital, daily work serving customers. The utility also continued its focus on maintaining long-term financial health.



MAINS & SERVICE AREA

117
square miles of service area

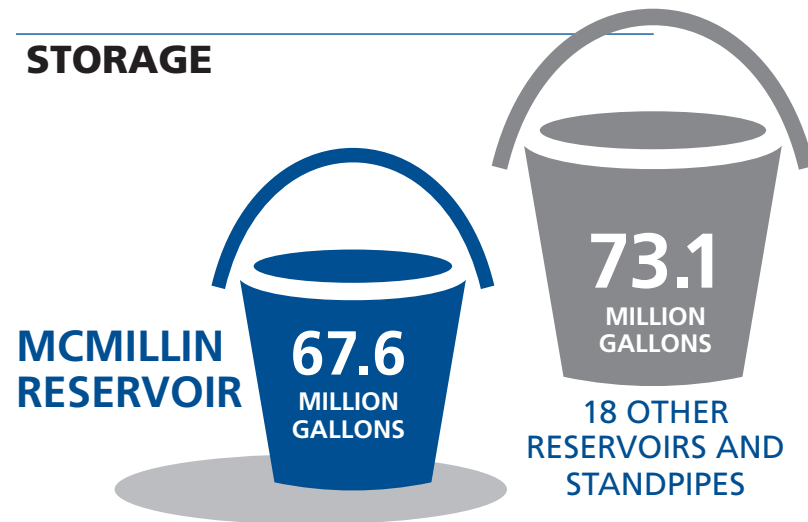
1,381 MILES OF WATER MAINS
1,231 DISTRIBUTION & 150 TRANSMISSION



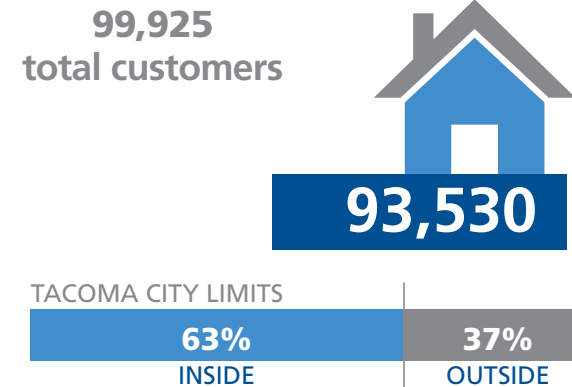
SUPPLY in million gallons per day



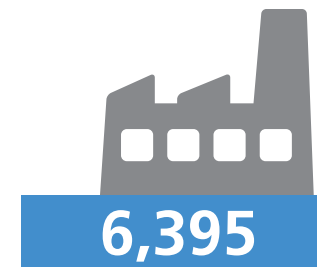
STORAGE



CUSTOMERS RESIDENTIAL

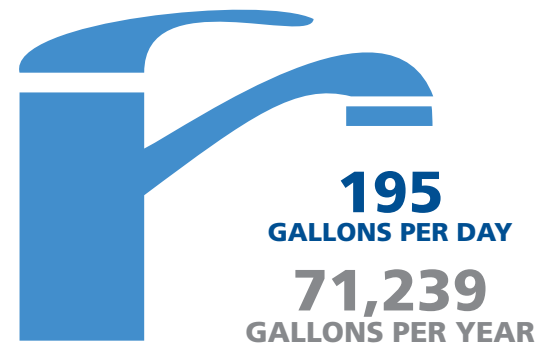


COMMERCIAL/INDUSTRIAL



People served directly by Tacoma Water 316,000
Through wholesale connections 274,000
In partner service areas 222,000

AVERAGE HOUSEHOLD USE



	Daily	Annually
2014	186	67,923
2013	182	66,705
2012	186	67,914
2011	182	66,757

6,260,923,064
TOTAL GALLONS USED IN 2015

ENVIRONMENT

WHAT WE DID TO PROTECT LAND AND WATER

- Captured 1,128 chinook salmon, 126 coho salmon, 1,364 pink salmon and 13 steelhead at the Green River Trap and Sort Facility. Of those, 209 chinook and 48 coho were transferred to state and tribal hatcheries for spawning. The rest were released back to the river.
- Conducted a project to ensure juvenile fish that enter the drinking water diversion area at the Green River Headworks are safely routed back to the river



RATES

We are proud to say that our rates are among the lowest in the region.



City of Puyallup
\$22 month
\$264 year

City of Kent
\$39 month
\$468 year

City of Bellevue
\$47 month
\$564 year



AVERAGE COST PER HOUSEHOLD

FINANCIAL

As a result of careful financial, ratemaking and risk management processes, our bond ratings are stable, which helps Tacoma Water borrow money at low interest rates. That helps keep rates low.

Value of our fixed assets
\$884.7 MILLION

Total operating revenue
\$98.1 MILLION

BOND RATINGS
Moody's **Aa2**
Standard & Poor's **AA**

TAXES WE PAY
Tacoma Gross Earnings
\$6.7 MILLION
Federal (Social Security)
\$1.5 MILLION
State
\$5.2 MILLION
Other cities' and counties' fees
\$656,230
Taxes as a percent of total revenue
16.5%



NOTEWORTHY

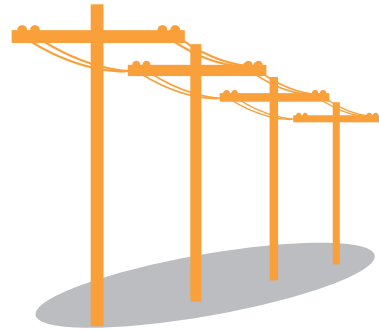
- Brought filtered water to the utility's entire system on Jan. 15 and completed Tacoma Water's largest capital project to date
- Brought new GIS system—BlueWave—online
- Won a Local Outstanding Civil Engineering Award from the American Society of Civil Engineers Seattle Section for the Green River Filtration Facility
- Added 1.8 miles of public access to the Historic Flume Line Train in South Tacoma

Under new Superintendent Chris Robinson, Tacoma Power proved resilient over the course of a record-setting weather year. The utility adapted to dry, hot, then wet conditions, protecting fish and minimizing potential environmental impacts of the drought. Tacoma Power also kept rates among the lowest in the region for another year, as well as continued to exceed its energy conservation goals.

LINES & SERVICE AREA

180
square miles of service area

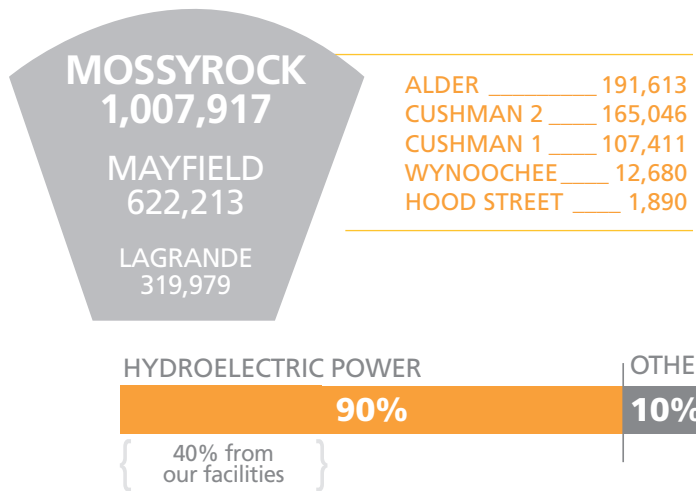
OVERHEAD
1,531
UNDERGROUND
834



2,365 MILES OF POWER LINES
2,014 DISTRIBUTION & 351 TRANSMISSION

About the distance from Tacoma to Dayton, OH

GENERATION in megawatt-hours produced per year



SUBSTATIONS

- 5 main/transmission substations
- 4 switching stations
- 49 distribution substations
- 12 dedicated distribution substations
- 23 BPA customer substations
- 8 generation switchyards

ENVIRONMENT

WHAT WE DID TO PROTECT LAND AND WATER

- Constructed 50 acres of elk forage fields on Cushman wildlife lands
- Thinned 125 acres of dense forest on Cushman and Cowlitz wildlife lands
- Created 100 habitat trees for cavity-nesting birds at Cushman
- Thinned 40 acres of young tree plantation on Cowlitz wildlife lands

792
EMPLOYEES

CUSTOMERS

173,664
total customers

RESIDENTIAL

155,498

COMMERCIAL/INDUSTRIAL

18,166

TACOMA CITY LIMITS



*375,000 total people served (Change in data reporting method from 2013 to 2014.)

AVERAGE HOUSEHOLD USE

31
kWh PER DAY
11,315
kWh PER YEAR

Daily Annually

2014	33	12,029
2013	34	12,490
2012	34	12,583
2011	31	11,606

CONSERVATION

The utility relies on conservation, as opposed to other, more expensive power sources.

SAVED
66 MILLION kWh
24.6 residential
41.4 commercial

INVESTED
\$13.8 MILLION
\$7.9 million
PAID BY TACOMA POWER
\$5.9 million
PAID BY CUSTOMERS



RATES

We are proud to say that our rates are among the lowest in the region.

8.6
PER kWh

kWh
=
kilowatt-hour

Seattle City Light

\$86 month
\$1,032 year

Snohomish PUD

\$88 month
\$1,056 year

Puget Sound Energy

\$88 month
\$1,056 year

Tacoma
\$77
month
\$924 year

BASED ON
TYPICAL HOME
WITHOUT
ELECTRIC HEAT

FINANCIAL

As a result of careful financial, ratemaking and risk management processes, our bond ratings are stable, which helps Tacoma Power borrow money at low interest rates. That helps keep rates low.

Value of our fixed assets
\$1.003 BILLION
Total operating revenue
\$410.6 MILLION

BOND RATINGS
Fitch AA-
Moody's Aa3
Standard & Poor's AA

TAXES WE PAY

Tacoma Gross Earnings
\$25.4 MILLION
Federal (Social Security)
\$6.8 MILLION
State
\$16.9 MILLION
Other cities' and counties' fees
\$6.6 MILLION
Taxes as a percent of operating revenue
13.6%



NOTEWORTHY

- Announced Pierce County's first community solar project and invited customers to invest
- Largely completed two new hatcheries near the Cushman Hydroelectric Project to help restore salmon populations
- Won award from National Hydropower Association recognizing a pioneering new fish passage on the North Fork Skokomish River that is helping secure salmon and steelhead populations

Click! Network, part of Tacoma Power, is one of the largest municipally owned telecommunications systems in the country. **Launched in 1998, Click! brought Tacoma and the surrounding area competition in the cable television market.**

SERVICE AREA



1,488 MILES OF FIBER-OPTIC & COAXIAL CABLE

About the distance from Tacoma to El Paso, TX

CUSTOMERS

CABLE TV



HIGH-SPEED INTERNET



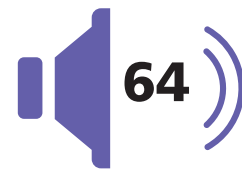
CABLE CHANNELS



VIDEO



HIGH DEFINITION



AUDIO

INTERNET SERVICE PROVIDERS

2

HIGH-SPEED INTERNET

- Rainier Connect
- Advanced Stream



The year saw Tacoma Rail weathering challenging circumstances as well as continuing to meet its core goal of providing efficient, cost-effective rail service.



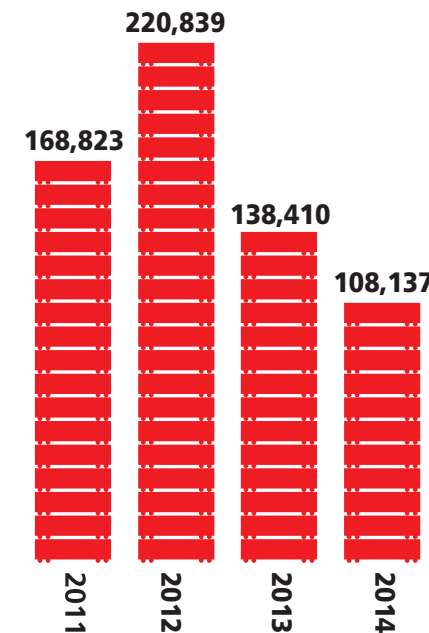
SERVICE AREA



204 MILES OF TRACK

About the distance from Tacoma to Salem, OR

CARS SWITCHED

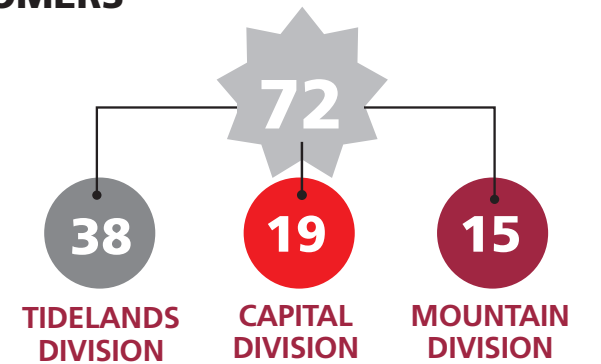


102,173 IN 2015

ONE OF THE BUSIEST
SHORT-LINE RAILROADS
IN THE COUNTRY
IN TERMS OF VOLUME AND FREIGHT

15
DIESEL LOCOMOTIVES

CUSTOMERS



FINANCIAL

Value of our fixed assets
\$24.7 MILLION
Total operating revenue
\$29.1 MILLION

TAXES WE PAY

Tacoma Gross Earnings
\$2.4 MILLION
Federal (Railroad retirement & Unemployment)
\$2.1 MILLION
State
\$964,556
Taxes as a percent of total revenue
19.08%



NOTEWORTHY

- Installed federally mandated safety system—Positive Train Control—on four of its 16 locomotives
- Continued to fund a volume incentive program to attract more intermodal business as part of its operating agreement with the Port of Tacoma.



TACOMA PUBLIC UTILITIES SERVICE AREA

